

# Top layer

## Allowed



pin knots 10 mm



light sound knot in diameter max 25 mm



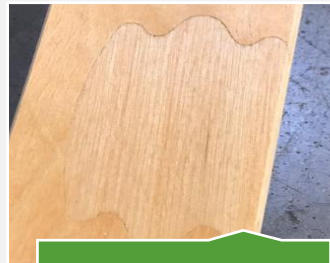
dark knots 10 mm, repaired if needed



mineral



different contrasting colour shades on one slat up to 10%



patches



pressure marks in 5 mm diameter



rough surface up to 10% of the surface, up to 0.3mm in depth

## Not allowed



open holes



splits not closing on gluing



dirty spots



core veneer



bark



insect or worm damage

# Bottom layer

## Allowed



pin knots 10 mm



light sound knot in diameter max 40 mm



dark sound knot in diameter max 20 mm, one per slat



half-closed black knot, filled with glue or repaired with putty max diameter 12 mm



mineral



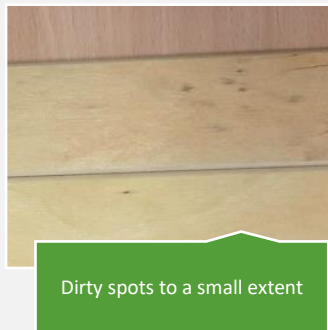
different contrasting colour shades on one slat up to 10%



splits 1-2 mm width, filled



core veneer up to 20% of the surface



Dirty spots to a small extent



Pressure marks in 6 mm diameter



Rough surface up to 20% of the surface, up to 0.3mm in depth

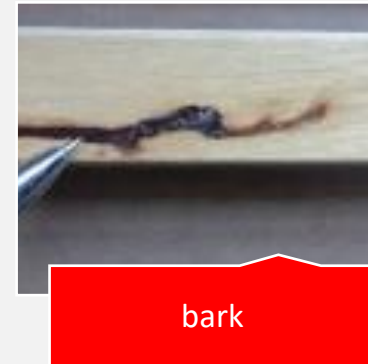
## Not allowed



open holes



splits not closing on gluing



bark



insect or worm damage

# Sides and edges

## Allowed



## Not allowed

